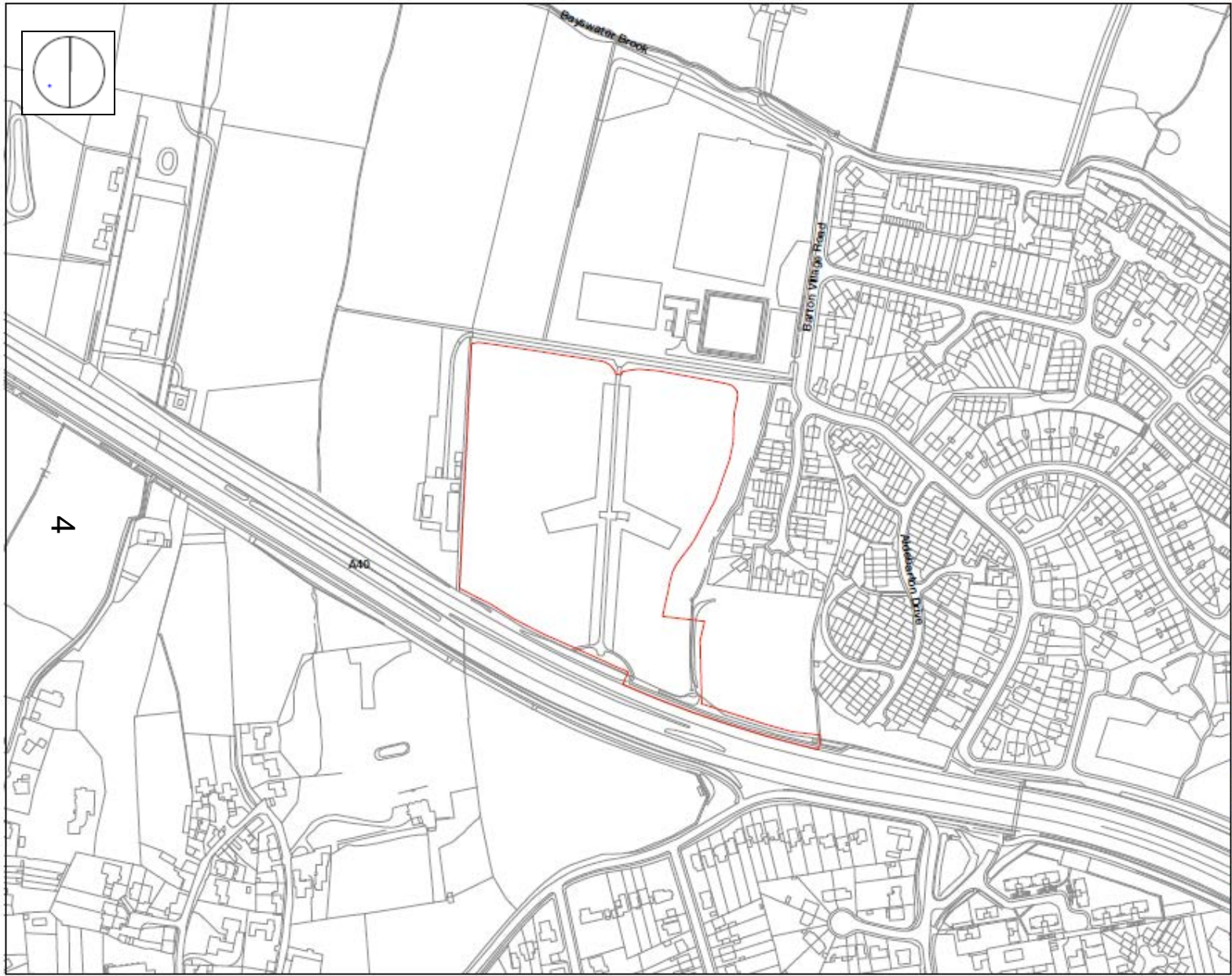


Welcome to the East Area Planning Committee

- This planning committee meeting is held in public but it is not a public meeting.
- There will be an opportunity for the public to address the committee on each application.
- If you wish to speak for or against a planning application, you need to have either requested it in advance, or hand in one of the available speaker forms, or speak to the clerk.
- Information on meeting protocol and conduct at the committee is set out in the Code of Practice.
- This is in the committee agenda just before the first planning application report.



Site Location Plan



Existing Access from Barton Village Road

www.oxford.gov.uk





Existing Access looking towards Barton Village Road

www.oxford.gov.uk



**OXFORD
CITY
COUNCIL**





Existing Access into the Allotments

www.oxford.gov.uk





Existing avenue of apple trees within the allotments





www.oxford.gov.uk



Within the Allotments





Access along the A40

www.oxford.gov.uk





Rear Access along the A40

www.oxford.gov.uk





Land at the Rear of the Allotments to become part of the Community Garden

www.oxford.gov.uk





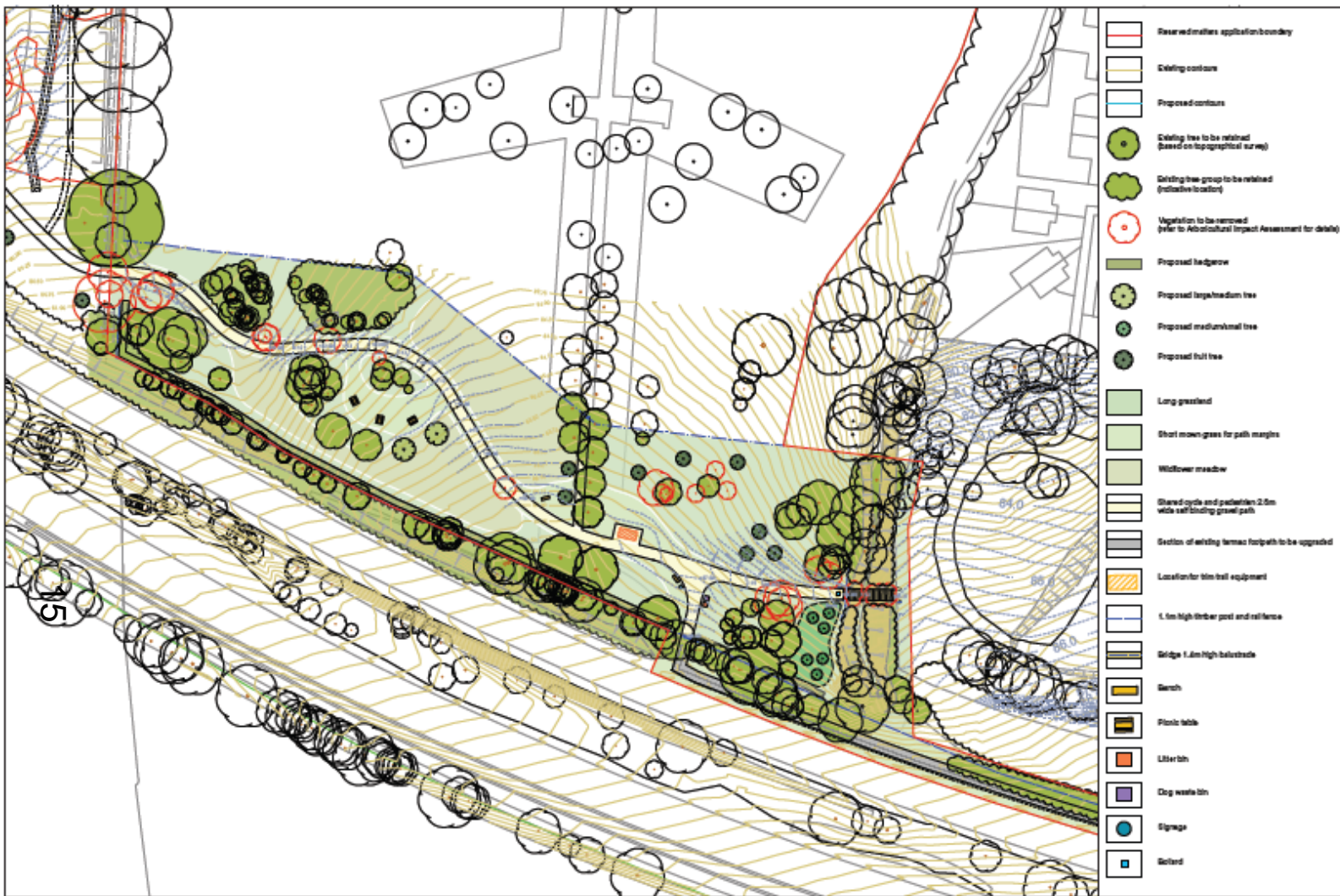
Existing Block Plan

www.oxford.gov.uk



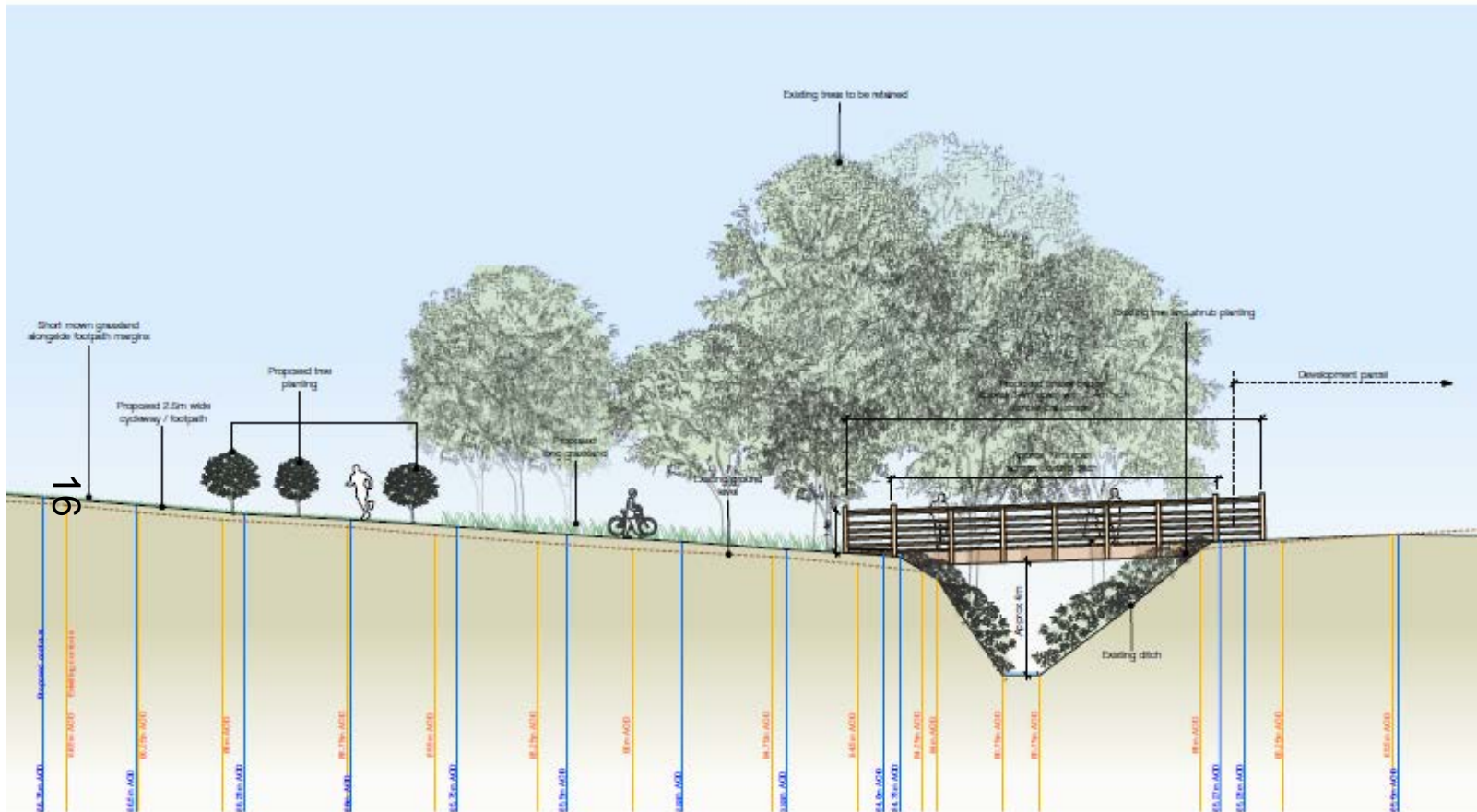


Allotment Proposed Layout



Community Garden Proposed Layout





Bridge Detail

